



COOLEMAN RIDGE PARK CARE GROUP

Newsletter July 2004

Previous Sunday meeting, June 20th

With rugged conditions forecast it wasn't surprising that people wondered if the day's event would be cancelled. Far from it: eighteen well-insulated Rotarians and Parkcarers were even relaxed enough to stop for afternoon tea just below Cooleman Trig. (See Gösta's report below).

Next Sunday meeting, July 18th

Prof. Elix guides us through the local lichens

- 1.30 - 4 pm
- meet at the horse paddock gate on Namatjira Drive near the Kambah Pool Road. Although the focus will not be on weeding, bring hat, gloves, weeder, drink, snack, raincoat if it is wet ☺

Future programme

Provisionally the year looks like this:

- July 18th – lichen walk, Arawang
- August 15th GAC/Darrell weeding
- September 19th – tree survey, Naarilla's area
- October 17th – GAN/Chauvel, weeding
- November 21st – GAS/Arawang, weeding
- December 19th – waterwatch old dam. ☺

Video

Molonglo Catchment Group asks the Landcare community to "Tell us about the good news" in our Landcare area.

Videos are to be sent in by Friday 13th August so that they can be collated into a short film which will be premiered at a Gala Film night during Landcare Week

Has anyone the camera, the skills and the interest to make a 10 minute film for us to submit?

Contact Doug - phone 6288 8589. ☺

Rabbits

The rabbit crew have been at work: they used explosives on the very big warren over the fence from the track up from Kathner St. Grant said to keep him informed of further rabbit activity and he will deal with it...it will of course be an ongoing thing. Jenny put a lot of time into organising this. ☺

June log

200604 small grave and rosebush between Cooleman Trig and Plantation

Pauline Lyngå, 6288 7009, gosta@webone.com.au July 2004

250604 cat, rabbit on Fencepost Hill ☺

Annual survey

Report from Doug:

Twelve people returned surveys. I suspect this figure represents a sample of those in the Park Care group interested in Cooleman Ridge. Certainly there was a diversity of interests reported in the survey returns. Around 75 % of respondents weeded or did other physical work on the Ridge. The remainder of respondents and a good number of the first group also enjoyed the Ridge as a recreation centre. Walking, running or just taking in the view seems to appeal to many.

Some 25 % of respondents commented that management of the Ridge should involve the community. Raising awareness of the Ridge amongst local residents is uppermost in many of our minds, especially as the perception of fire fuel loads over the summer months causes anxiety in some residents. The Park Care group executive is looking at ways to achieve this awareness raising.

Of course, Environment ACT is charged with overall management of the Ridge and any local initiatives could not go ahead without consultation. From the Park Care perspective, the objectives of Environment ACT in balancing recreation, conservation and fire fuel suppression in Canberra Nature Park is not clear. This balance and some decent rain, might encourage interest in planting programs on the Ridge.

Another theme to emerge from the survey returns was an interest in plant identification. Perhaps spending some time each monthly meeting tutoring those wishing to learn more is an option.

Many people commented on the regeneration they've observed.

Another suggestion for monthly work parties was to work and talk. Work would be combined with a short talk on ecological processes on the Ridge. ☺

CVA team , 9th June

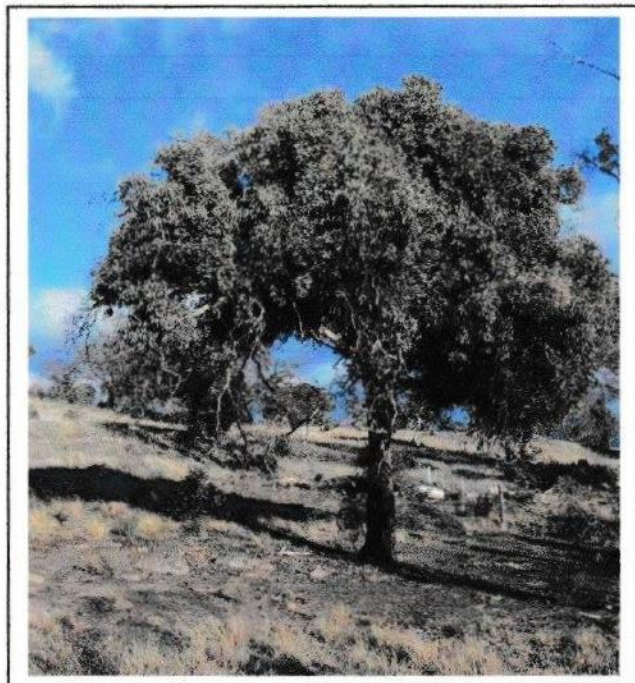
Conservation Volunteers came to the Ridge on Wednesday 9th to monitor weed abundances in a square above the Olympic Site, close to the track – chosen because of previous spraying programmes there.

It was a pretty depressing showing with very few native plants to be found. Then our young overseas visitors threw themselves on the weeds growing on the Kathner St dam's outer wall – a great help. We will welcome

another team in 6 months' time for more monitoring of the same site, and more weeding. ☉

What's around

Family: MYRTACEAE – myrtus L. myrtle. The Myrtle family



Eucalyptus polyanthemos – Red Box

Tree to 20 m, bark smooth above lower trunk
eu Gr: prefix well + *calyptos* covered rf. bud well-covered by operculum or cap, *poly* Gr; many + *antheion* flower

<http://plantnet.rbgsyd.nsw.gov.au>

This site is under development, and I check it from time to time. *Keys and descriptions* gets you to *FloraOnline* where a click on *Quick search* gives a box where you can key in a name.

I tried “*Eryngium rostratum*” – nothing. “*Eryngium*” brought up several species and *E. ovinum*, common name Blue Devil, matched our plant. Images and distribution map followed. “Blue Devil” reached the same page. On to “*Xerochrysum viscosum*” bringing up our Sticky Everlasting, synonyms *Bracteantha viscosa* and *Helichrysum viscosum*. Keying in the synonyms drew further blanks.

So it seems one needs to know the current name or the common name.

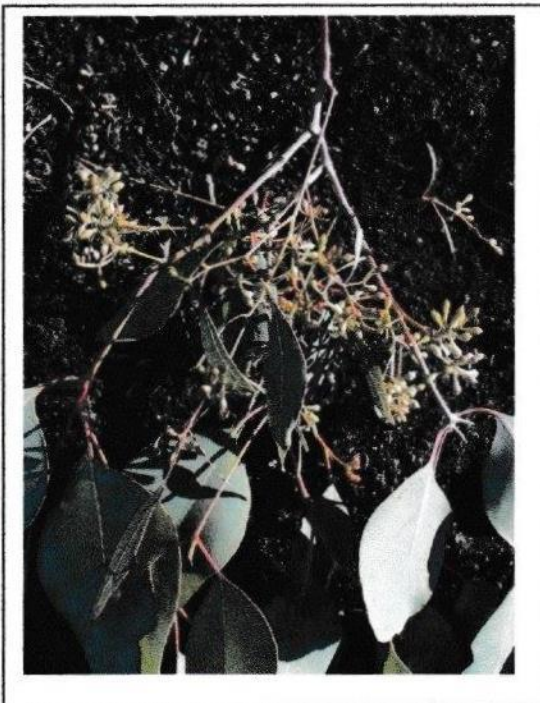
“Eucalyst” worked, but not “WattleWeb”. ☺

Fresh Grave

It was great having Parkcare coordinator Angela walking the Trail with us, no more so than when we noticed a small fresh mound of earth with a miniature rosebush planted close by. It was easy to picture a beloved pet dying and a grieving owner left to walk the Ridge alone. This is a sensitive issue, and outside the mandate of a parkcare group – over to you, Angela. ☺

!!!!!!!Lichen walk!!!!!!!

Make sure Sunday 18th July is in your diary. Prof Elix has a lot to show and tell us. ☺



The tree shown has massed buds in terminal panicles of 3 to 7-flowered umbels. *E. polyanthemos* flowers September to December. ☺

Angela

Angela writes: I have passed on the information about the Bursaria and burial site to the rangers. They will deal with them as soon as practicable.

In regards to the A.baileyana patch, this has been put on the weed removal agenda for later in the year when the plants are actively growing and the chemical will have the most effect. ☺

Nature Trail Walk

Gösta reports:

The temperature was low, the wind fresh but the sky was high and blue when an intrepid group of Rotarians and Parkcarers walked the Cooleman Ridge Nature Trail. John Spencer and David Evans led the Rotary group, Wendy Rainbird from Farrer Ridge and Angela Calliess from Canberra Nature Park were there as well as a good turnout of our Parkcarers. The aim was to survey the damage that the 2003 fire had caused the trail and discuss what can be done about it. With strong support from both Weston Creek Rotary and Canberra Nature Park, we feel inspired to do a great job of it. Several of the posts had burnt down and some of the trees that we described in the pamphlet are no longer there, but the views are still stunning and there are plenty of interesting features to replace what is lost. The planning stage is to be followed by work parties and application for grants sufficient to establish an even more interesting trail than the one that the fire took. ☺